

VoCALL 16 Type B Outstation



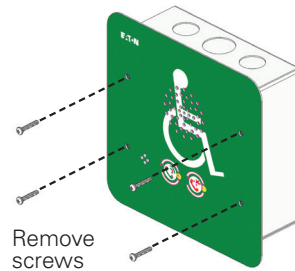
Product Number	Description
TB16-GS	Type B outstation (Green, Surface Mount)
TB16-GF	Type B outstation (Green, Flush Mount)
TB16-RS	Type B outstation (Red, Surface Mount)
TB16-RF	Type B outstation (Red, Flush Mount)
TB16-SS	Type B outstation AutoTex steel, Surface Mount
TB16-SF	Type B outstation AutoTex steel, Flush Mount,

Finish & Mounting	Red, Green, Surface, Flush
Cabling	FP200 2X2 / 4X1 Core; 1.5 sq mm - Enhanced may be required
Configuration & Distance	Loop configuration; Maximum distance between two units - 200 meter
Dimension	H 136 X W 136 X D 56 mm (0.6 Kg)
Knockouts	5 x 20 mm dia; 1 x 25 mm dia, 6 x 20mm dia (rear)

Step 1

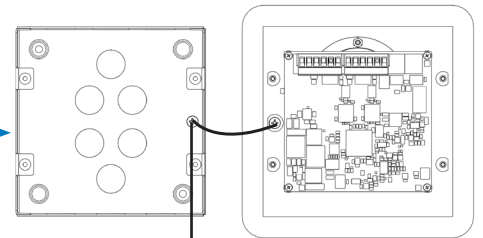


Step 2



Remove screws

Step 3

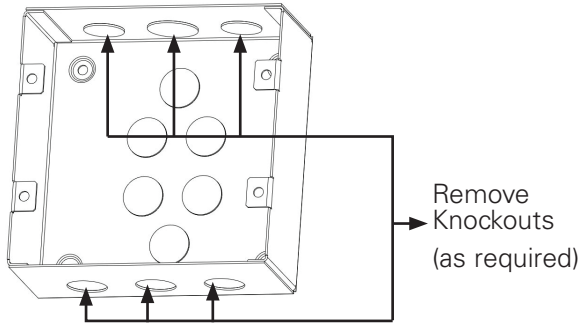


Disconnect ground Cable

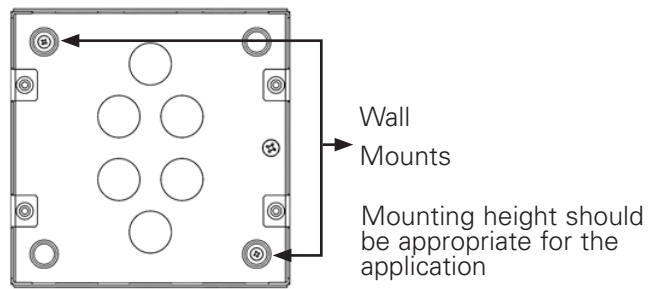


Powering Business Worldwide

Step 4

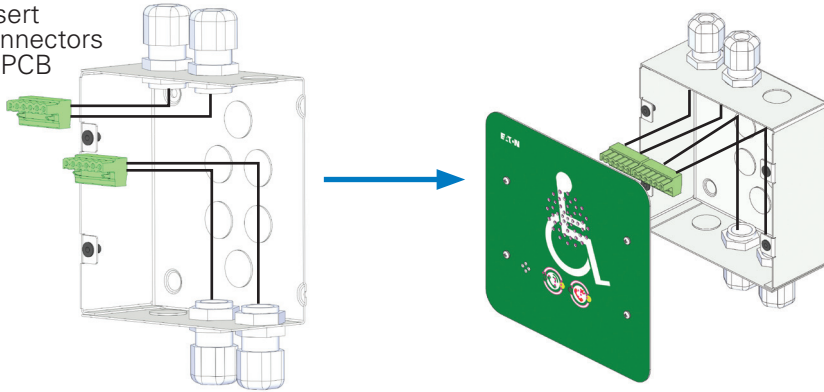


Step 5



Step 6

Insert connectors in PCB



Step 7

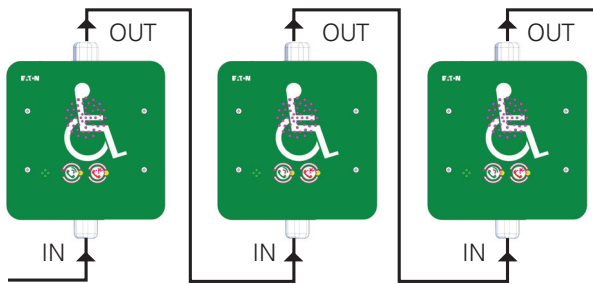
Close the unit



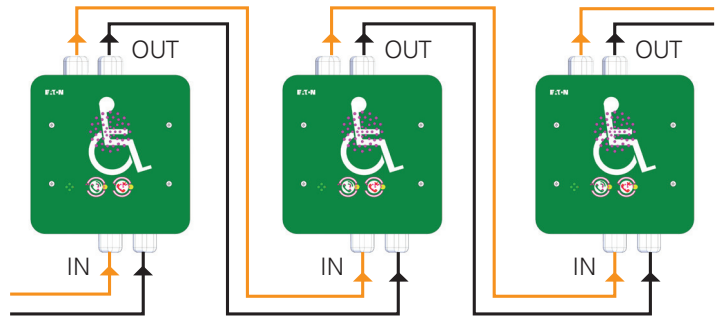
Wiring - Four core cable loop

Wiring - Two core cable loop

OS- RETURN (Panel)

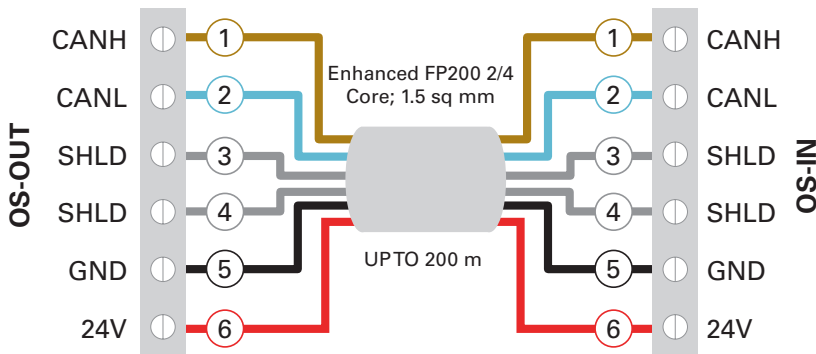


OS- RETURN (Panel)



OS-OUT (Panel)

OS-OUT (Panel)



CANH	CANL	SHLD	SHLD	GND	24V
1	2	3	4	5	6
DATA				POWER	

